

LEXTON

SEASIDE SERIES



HOUSE FEATURES

- 3 BEDROOMS
- 2.5 BATHS
- LIVING
- RUMPUS
- ALFRESCO

HOUSE AREAS

LIVING:	183 m ²
GARAGE:	40 m ²
TOTAL Sqm:	223 m ²
TOTAL Sq's:	24 Sq

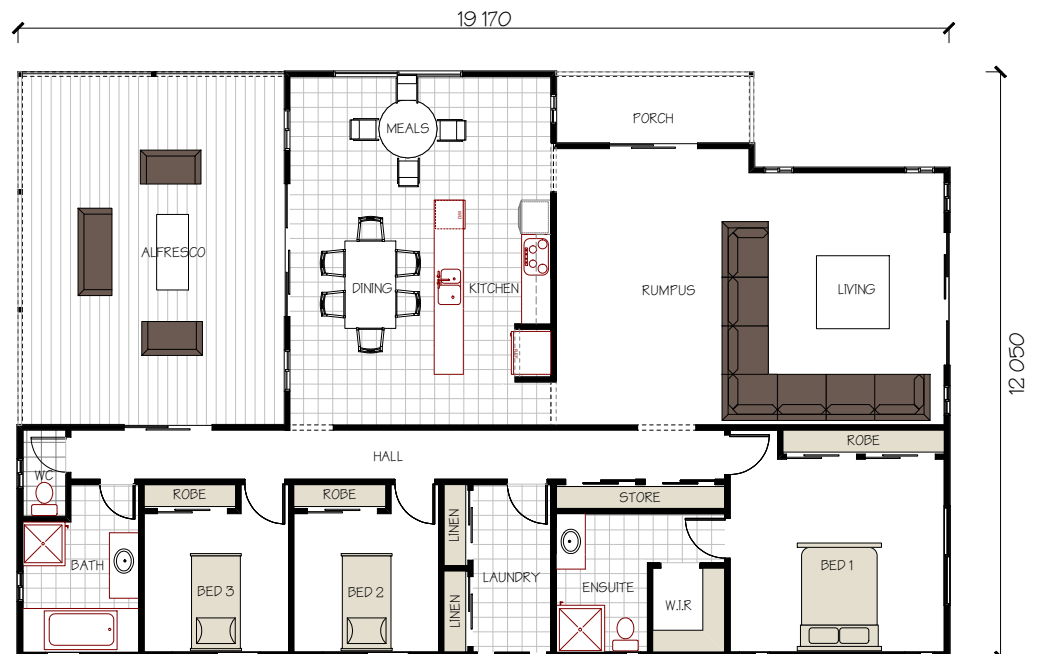
ALSO AVAILABLE

CONTACT DETAILS

BluSteel Homes
 P.O. BOX 1250, SURREY HILLS
 NORTH
 VICTORIA, 3127

Ph: (03) 9890 0618
 FAX: (03) 9898 0600

Email: info@blusteelhomes.com.au
www.blusteelhomes.com.au



FLOOR PLAN